

ATBC + SCB Africa Meeting, Arusha 2011

Organised Fieldtrips

Arusha National Park Day Trip, on 11, 12, and 17 June, 2011



Description:

Only 45 km away, Arusha NP is well worth a visit, especially if you plan to dash away immediately after the conference. These one-day trips will give you the opportunity to explore the Park's wide range of habitats, the string of crater lakes where you can admire water birds, the highland montane forest and impressive views of the imposing Mt. Meru. Vegetation in the Park is correlated to altitude and geology of the area. Ngurdoto Crater is surrounded by forest whilst the crater floor is a swampy area. Mt. Meru is a mixture of lush forests and bare rocks. This makes for a highly diverse Park with somewhat odd parallels, such as zebra grazing adjacent to lush montane forest...



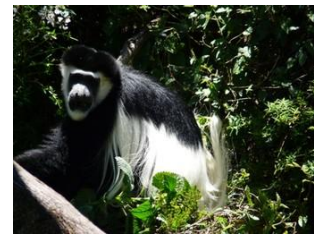
Total duration: 1 day trip

We will **depart at 5:30 am** from Arusha to make it in time for when the Park doors open so that we can do a game drive. We'll be back in Arusha City by 6:00 pm to make it to any evening appointments.

Group size: Min. of 5 people needed per vehicle to keep costs low.

Cost: \$90 per person. Cost includes:

transport, park fees, packed breakfast, picnic lunch, & bottled water. Excludes tips and optional items (see NOTE below).



Book now! Complete the [Fieldtrip Booking Form](#).

Inquiries: Email: fieldtrips@atbc-scbafrica2011.org

Equipment and preparation: Just your binoculars and a camera.

Note: A **guided walk** (\$10 extra per person) and **canoeing** in Lake Momella are optional. Canoeing is an excellent way to get up close to buffalo, giraffes, bushbucks and water buck grazing on the shore.

